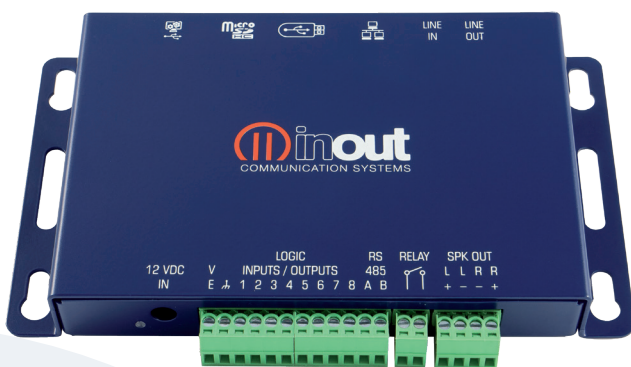


NP-5

Network Audio Player



Main features

Main voltage of 12VDC (PSU included)

ARM Cortex® Processor

Multidrive Storage, with files kept in removable microSD-HC flash memory (FAT 32)

Preamplified L+R stereo audio input for external music source

Preamplified L+R stereo audio output (0dB)

Amplified stereo audio output 15W+15W

8 logic on/off ports individually configurable as input or output

1 programmable relay output

1 daily scheduling function

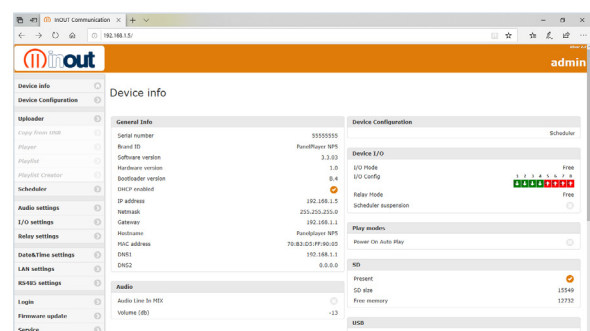
LAN Ethernet port

Firmware Upgrade with web page

NP-5 is an amplified audio player that simplifies the creation of interactive projects, didactic pathways, informative totems for exhibitions, musical scenarios, commercial spaces, relax areas and many more. NP-5 is a high-tech device of small dimensions, a flat metallic container suitable for any application in small spaces.

It includes:

- ▶ Interactive audio player with microSD card slot;
- ▶ Class D Amplifier stereo 15+15W;
- ▶ 8 individually configurable logic ports, both as inputs (for sequential playback of audio files) for switches or touch-sensor, or as outputs for external relay activation;
- ▶ Ethernet LAN 10/100 port for I/O configuration, event schedule, track selection and control remote by 3rd parts systems;
- ▶ RS485 serial port for optional remote control;
- ▶ Audio Mixer for external stereo/mono source





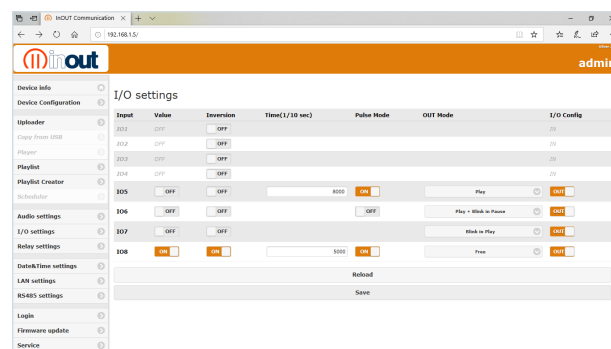
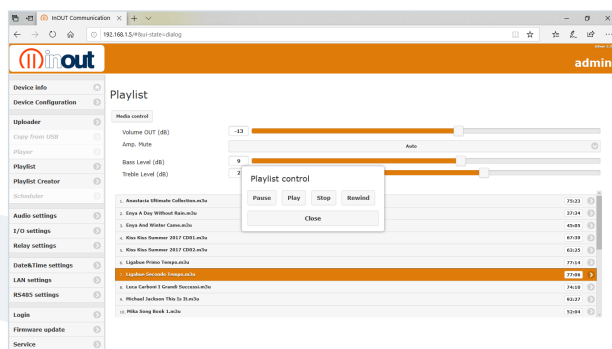
Power and I/O connection

- 1 Led Power
- 2 Power supply
- 3 Logic inputs and outputs
- 4 RS-485 serial port
- 5 Relay contact output
- 6 Speakers output



Front panel connection

- A Stereo audio output
- B Stereo audio input
- C Ethernet LAN 10/100Mbit/s port
- D Host USB port
- E MicroSD card slot
- F Status LED
- G Device USB port



Technical Characteristics

Input e Output

- ▶ Preamplified L+R stereo audio input for external music source with mixer function
- ▶ Preamplified L+R stereo audio output (0dB)
- ▶ Amplified stereo audio output 15W+15W/8ohm
- ▶ 8 logic on/off ports individually configurable as input or output
- ▶ Logic inputs for playlist or file activation or player control (play/stop/next/previous/volume)
- ▶ Logic outputs for the simple control of external devices (relays, etc.)
- ▶ Programmable relay output
- ▶ RS485 control port for remote control
- ▶ 1 x USB 2.0 type A connector device(host) for Flash pen drive
- ▶ 1 x MicroSD port (Content Storage)
- ▶ 1 x Ethernet LAN 10/100 port for I/O configuration, 1 event schedule, track selection and remote control systems

Functions

- ▶ Supported lossy audio formats: **MP3**.
- ▶ Internal DSP with mixing function for all audio inputs
- ▶ WEB Server for configuration (LAN settings, clock, etc.)
- ▶ Scheduling function daily event
- ▶ Playlist creation
- ▶ LAN TCP/IP control
- ▶ RTC - Integrated real time clock with backup battery (schedule)
- ▶ Firmware Upgrade with web page
- ▶ Keyboard managements (12 keys)
- ▶ Size: 147x84x19 mm
- ▶ Weight: 250 gr
- ▶ Operating temperature: 0° to +60°C
- ▶ Storage temperature: -20° to +60°C