

NP-10

Network Audio Player



Main features

Main voltage of 12÷24VDC (PSU included)

ARM Cortex® Processor

Multidrive Storage, with files kept in removable microSD-HC flash memory (FAT 32).

Preamplified L+R stereo audio input for external music source

Preamplified L+R stereo audio output (0dB).

Amplified stereo audio output 20W+20W.

8 logic on/off ports individually configurable as input or output

1 programmable relay output

LAN Ethernet port

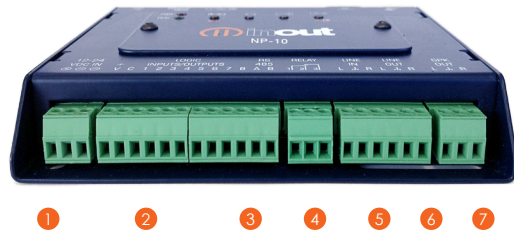
Firmware Upgrade via USB flash pen drive.

NP-10 is an amplified audio player that simplifies the creation of interactive projects, didactic pathways, informative totems for exhibitions, musical scenarios, commercial spaces, relax areas and many more. NP-10 is interactive, so it's easier to capture the attention of people moving nearby using jingles, slogans or a series of notices activated by a small infrared sensor. A highly technological device, yet with the very small dimensions of 116 x 116 x 22 mm.

It includes:

- ▶ Interactive audio player with microSD card slot;
- ▶ Class D Amplifier stereo 20+20W;
- ▶ 8 individually configurable logic ports, both as inputs (for sequential playback of audio files) for switches or touch-sensor, or as outputs for external relay activation;
- ▶ Reserved input for infrared motion sensor;
- ▶ Ethernet LAN 10/100 port for I/O configuration, events schedule, track selection and control remote by 3rd systems;
- ▶ RS485 serial port for optional remote control;
- ▶ Audio Mixer for external stereo/mono source.

Audio and I/O connection

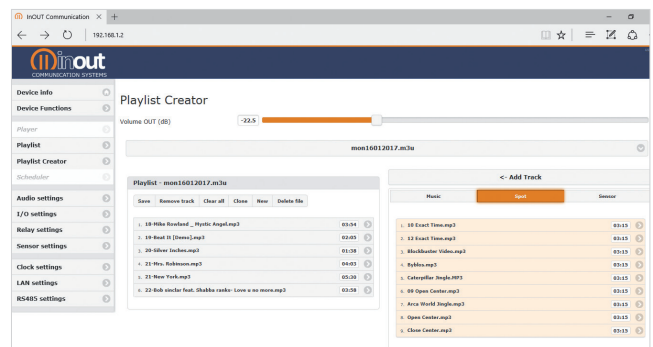
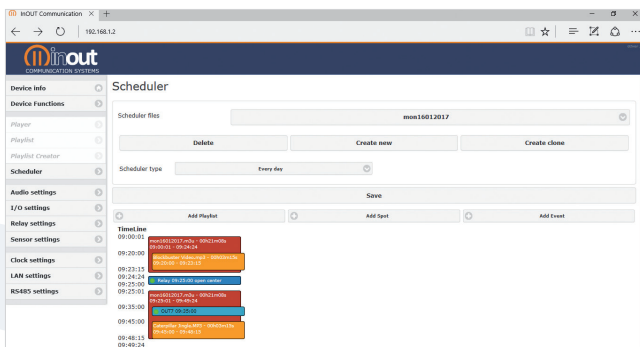


- 1 Power supply
- 2 Logic inputs and outputs
- 3 RS-485 serial port
- 4 Relay contact output
- 5 Stereo audio input
- 6 Stereo audio output
- 7 Speakers output

Front panel connection



- A Motion sensor input
- B Ethernet 100Mbit/s port
- C Host USB port
- D MicroSD card slot
- E Device USB port
- F Physical controls
- G Status LEDs



Technical Characteristics

Input e Output

- ▶ Preamplified L+R stereo audio input for external music source with mixer function
- ▶ Preamplified L+R stereo audio output (0dB).
- ▶ Amplified stereo audio output 20W+20W.
- ▶ 8 logic on/off ports individually configurable as input or output
- ▶ Logic inputs for playlist or file activation or player control (play/stop/next/previous/volume).
- ▶ Logic outputs for the simple control of external devices (relays, etc.)
- ▶ Programmable relay output NO/NC
- ▶ Motion sensor input
- ▶ RS485 control port for remote control (play / stop / next / previous / volume)
- ▶ 1 x USB 2.0 type A connector device(host) for Flash pen drive.
- ▶ 1 x MicroUSB 2.0 (device) for configuration and files import to microSD Flash card.
- ▶ 1 x MicroSD port (Content Storage)
- ▶ 1 x Ethernet LAN 10/100 port for I/O configuration, events schedule, track selection and remote control systems
- ▶ 4 buttons: play, stop, track forward, track back and output volume.

Functions

- ▶ Supported lossy and loseless audio formats: MP3, WAV.
- ▶ Internal DSP with mixing function for all audio inputs, 5-band EQ and programmable cut-off frequencies.
- ▶ WEB Server for configuration (LAN settings, clock, etc.), scheduling function (repetitive or daily/ weekly events).
- ▶ Playlist creation
- ▶ Telnet remote control
- ▶ RTC - Integrated real time clock with backup battery (schedule)
- ▶ Internal not volatile NOR Flash for customizations and the storage of E-Files or repetitive messages (chime, etc.)
- ▶ Firmware Upgrade via USB 2.0 flash pen drive
- ▶ DIP switches for factory reset and configuration recall;
- ▶ Keyboard managements (16 keys).