

# WM TOUCH USER GUIDE

## Overview

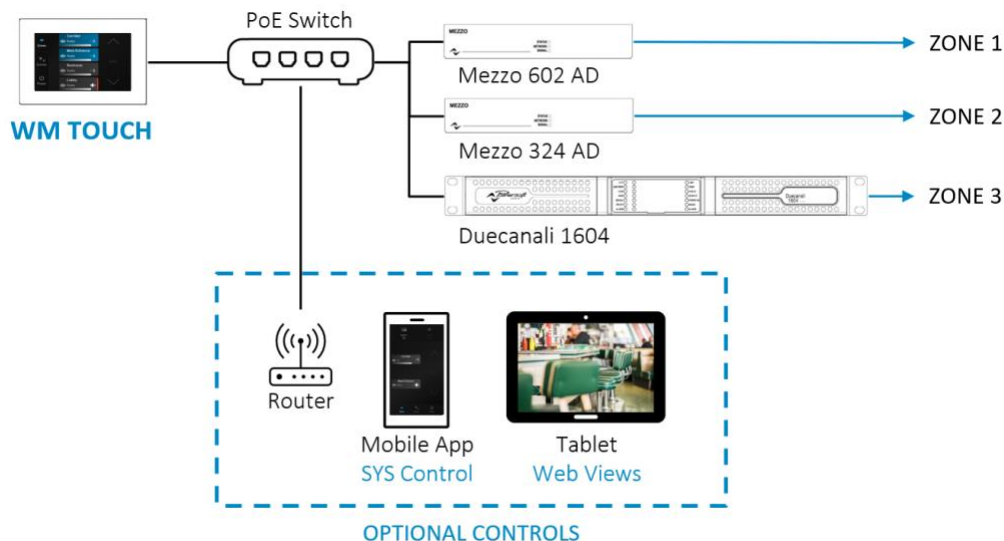
The WM Touch is a PoE fed wall-mounted touch screen solution aimed at remotely controlling audio system functionalities, such as zone level and source selection, system scenes recall, and system on/off.

The WM Touch can be used for two purposes:

- Mainly, as a dedicated wall-mounted touch screen for system control, including that of zones and sources. Controls are shared over the network via ethernet cable, and multiple touch screens can be used in the same system.
- As a host for optional system control user interfaces (Views) that can be accessed from Powersoft's [SYS Control](#) mobile app, or from a tablet or PC web browser (Web Views). In other words, with the appropriate configuration, whenever a WM Touch is present in the network, users are also able to control the system via the app or web browsers.<sup>1</sup>

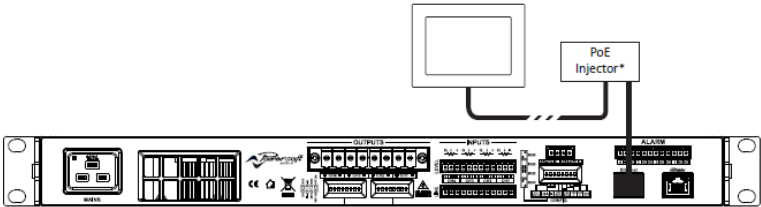
<sup>1</sup> When using mobile phones and tablets, a router will be necessary to connect these devices to the system control network.

One WM Touch alone can handle the controls of an entire system of Powersoft amplifiers. It is not necessary to keep ArmoníaPlus or a dedicated PC running to access these system controls.

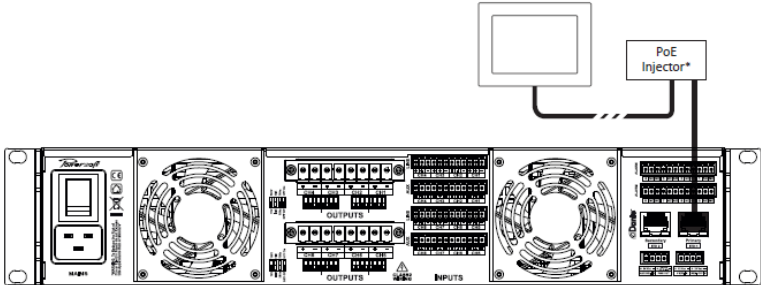


A PoE injector or PoE switch is necessary for powering the WM Touch and a regular Cat5 cable (or above) can be used for the connection. The WM Touch must always be in the same network that is connected to the control ethernet ports of the amplifiers, as indicated below.

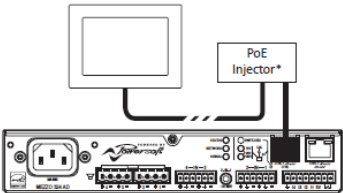
Duecanali  
Quattrocanali



Ottocanali



Mezzo



\*Not included

# Compatibility

The WM Touch is compatible with Duecanali DSP+D, Quattrocanali DSP+D, Ottocanali DSP+D, Mezzo A, Mezzo AD, X Series, and T Series amplifiers.

## Configuration

The WM Touch control interface layout is pre-defined and will automatically adapt to the different user configurations, including screen orientation. Some basic set-up can be performed directly on the WM Touch, whilst more advanced configurations will require the software ArmoníaPlus (version 2.1 or later).

### Software Configuration

In ArmoníaPlus, a new virtual WM Touch can be added to the Workspace from Design > Controls and by clicking the WM Touch icon in the top bar.



Alternatively, online panels already connected and available in the network can be dragged and dropped to the Workspace from the Discovery bar (Design > Match).

Once a WM Touch is in the Workspace, under the Design > Control, select one or more panels and proceed with the configuration from the ribbon menu.



From the ribbon menu, it will be possible to:

- 1 Edit the WM Touch name. This will be the name displayed on the device itself.
- 2 Select the control functions to be displayed on the WM Touch.
  - a. Zone Level – displays level controls for the zone(s) or sub-zone(s) selected.
  - b. Mute / Unmute – displays the mute controls for the zone(s) or sub-zone(s) selected.
  - c. Source Selection – enable users to choose from the different sources available for the zone(s) selected.
  - d. Scenes Recall – enable users to choose from the different scenes (system configurations) created for the system.
  - e. System On/Off – displays an on/off button.
- 3 Select the zones or sub-zones to be controlled by the panel. This option will only be available if either 'Zone Level', 'Zone Mute' or 'Source Selection' boxes are ticked.

4

Perform additional configurations, such as:

- a. Selecting the time for the screen lock activation (only available for online devices). The timer can also be configured locally on the WM Touch itself.
- b. Enabling and setting a 4-digit passcode for exiting the screen lock.
- c. Loading a custom logo to be displayed in the screen lock window.

Just like with Powersoft amplifiers, the IP address of the WM Touch can be configured under Config > IP. This option is only available for online devices.

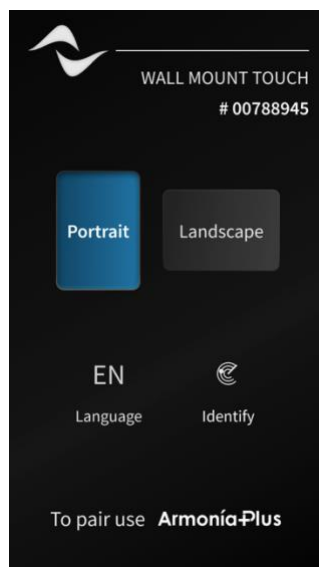
## Local Configuration

### *Language and Screen Orientation*

The start-up screen of the WM Touch allows the configuration of the screen orientation mode and the interface language.

### *Identify*

The start-up screen also displays an 'Identify' button. When pressing this button, the matching device will be highlighted in ArmoníaPlus, under the Discovery bar (Design > Match). The 'Identify' button is also available in the 'Hidden Settings' menu (see below).

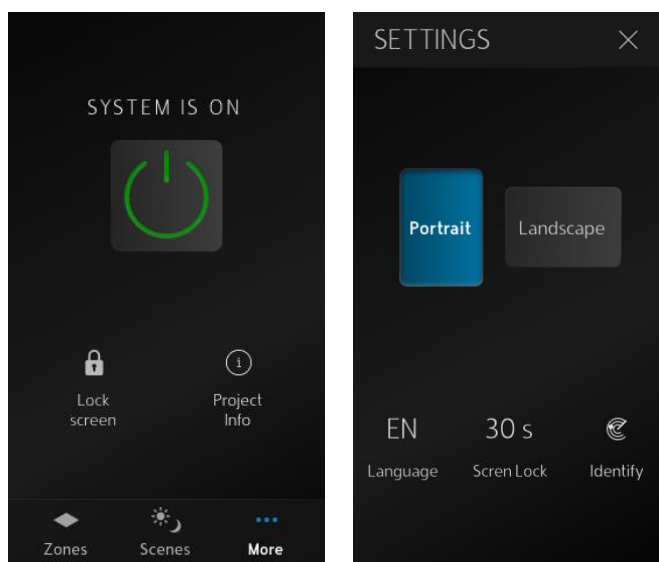


### *Hidden Settings Menu*

After the WM Touch has been configured with ArmoníaPlus, and the system is already running, it is still possible to change the Language and Screen orientation from the 'Hidden Settings' menu. To access the menu, select 'More' from the main ribbon menu (only visible when the system is running). Press and hold the 'Project Info' icon for 2 seconds and release.

### *Screen Lock & Timer*

The touch screen can be manually locked by pressing More > Lock Screen. By default, the screen will automatically be locked after 30 seconds of inactivity and the display brightness will be reduced. This timer can be changed to a set of predefined values from the 'Hidden Settings' menu.

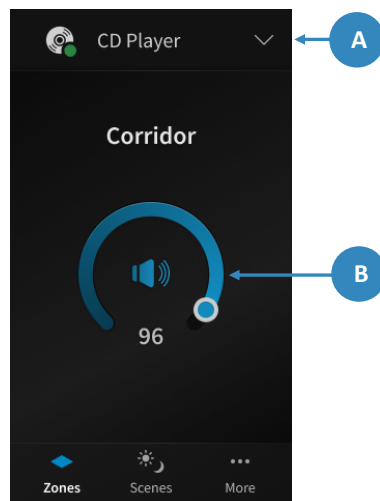


# Operation

The WM Touch will automatically adapt to the different user configurations selected, including different screen orientation modes. Additionally, the layout will change depending on how many zones the screen has been configured to control.

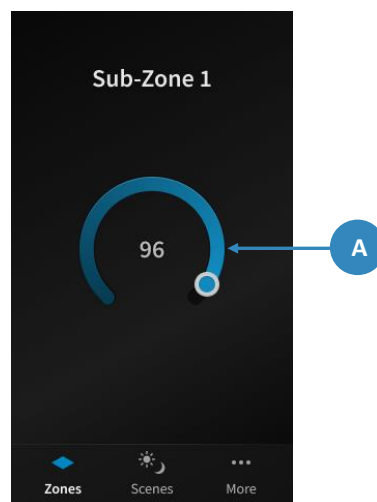
## Single Zone Operation

When the WM Touch has been configured to control one single zone, the active source playing in that zone can be selected from the dropdown menu on the top of the screen (A). The volume can be controlled using the circular slider and pressing the speaker icon will mute/unmute the zone (B).



## Single Sub-Zone Operation

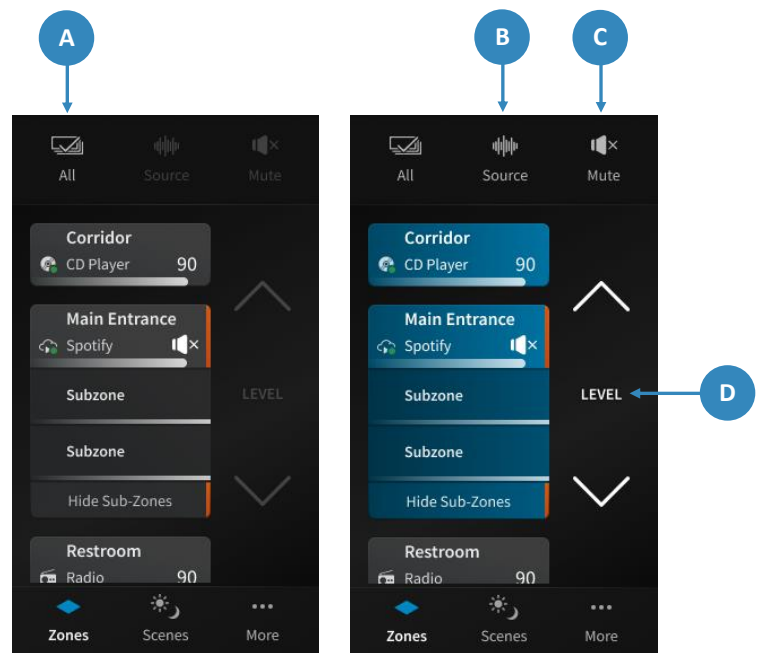
When the WM Touch has been configured to control one single sub-zone, only the level can be controlled using the circular slider (A).



## Multi-Zone Operation

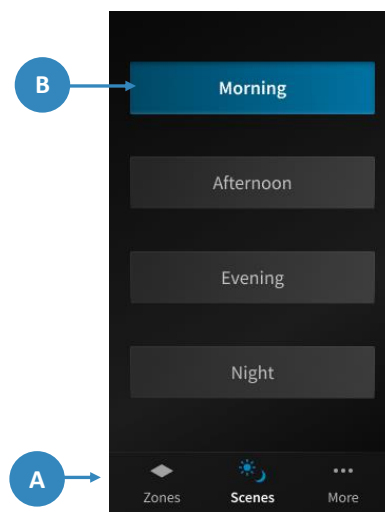
In a multi-zone configuration, it is possible to control multiple zones simultaneously, either by manually selecting each zone or by using the 'Select All' button (A).

Once one or more zones have been selected, it will be possible to select the source playing in those zones (B), mute/unmute them (C), and adjust their level (D). When multiple zones are selected, the level changes applied will maintain the relative level differences between them.



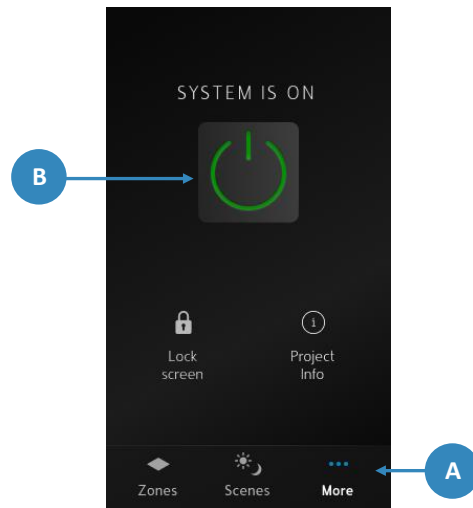
## Scenes Selection

Scenes can be accessed from the ribbon menu (A). Once inside the Scenes window, load a different system configuration by pressing the selected scene on the screen, holding until loading is full (B), and releasing.



## System ON/OFF

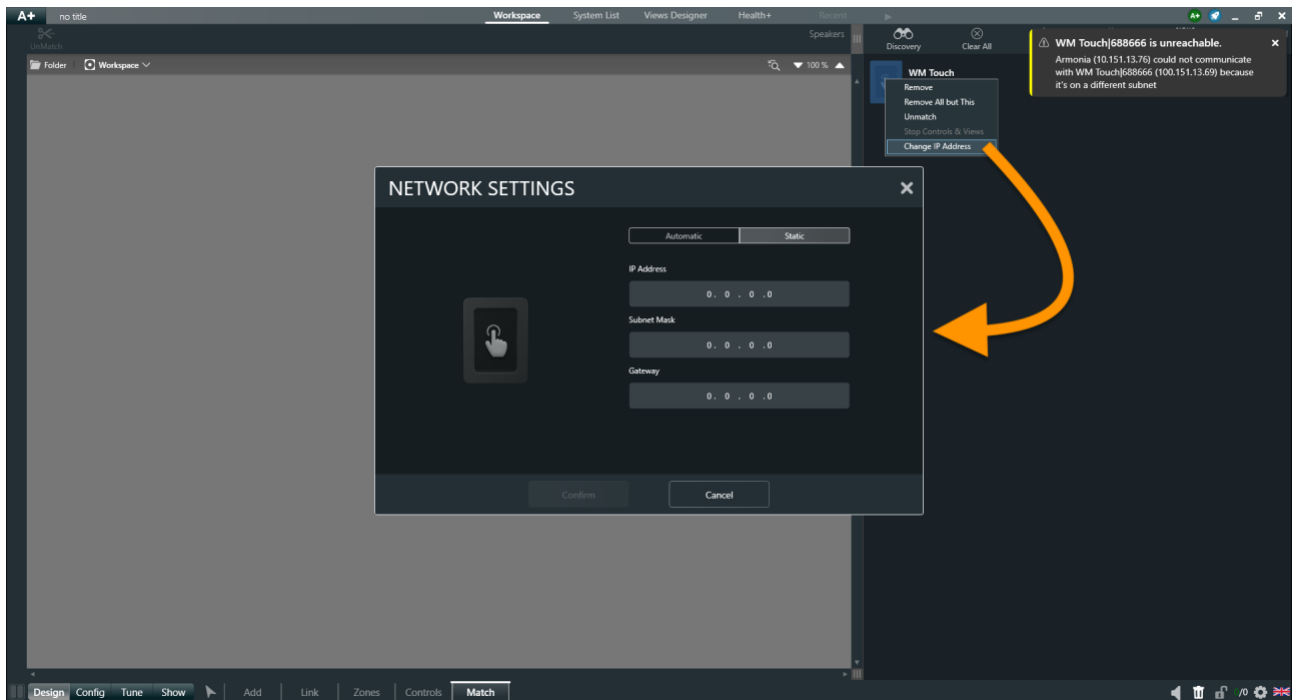
The system on/off control can be accessed via the 'More' icon in the ribbon menu (A). A new window will be opened from where the system can be turned on/off by pressing the dedicated button (B), holding it until loading is full, and releasing it.





# Network recovery

It is possible to recover a WM Touch when its IP address is set outside the system subnet, or in case of unexpected changes to the network. This is done directly within ArmoníaPlus, where it is possible to discover and configure the IP address of a WM Touch from a different subnet in the Design > Match page.



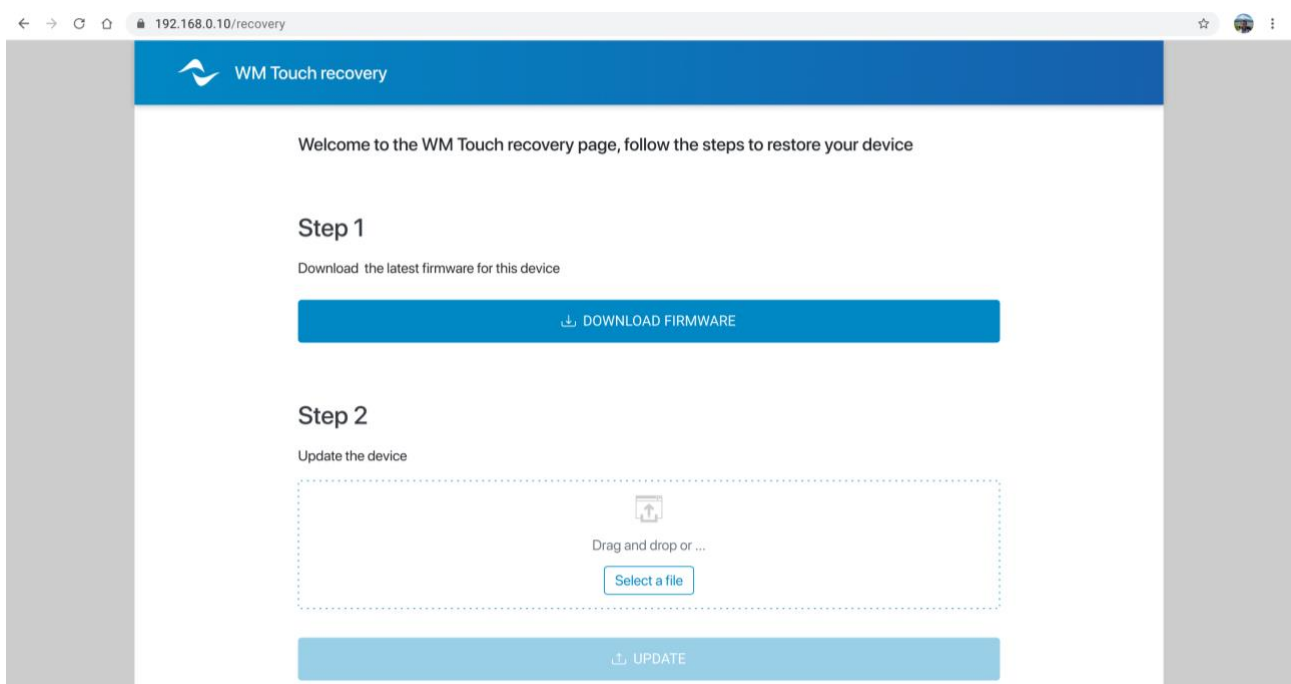
# Troubleshooting

In some rare cases, the WM Touch may display the message “Update Failed” following a reboot or firmware update. This means that the device firmware needs to be updated and the configurations re-loaded to the WM Touch. Follow the procedure below to recover the device.

1. From a computer connected to the same network of the WM Touch, type in the IP address of the device in any web browser, followed by /recovery. This will open the WM Touch Recovery page from where the firmware can be updated (see below).

If you have a mobile phone connected to the same network as the WM Touch, you can use the QR code provided on the screen to access the recovery page.

Please note that while connected to the recovery page, the device will not show up in the ‘Discovery’ tab in ArmoníaPlus.



2. If the computer is connected to the internet, it will be possible to download the latest firmware version (Step 1). Alternatively, you can manually upload a file containing the firmware update (Step 2).
3. Click on ‘Update’ to start the updating process. This may take a few minutes.
4. Once the update is finished, close the WM Touch Recovery page.
5. In ArmoníaPlus, go to the ‘Controls & Views’ options on the top right corner of the screen and stop the system currently running.



6. Reload the configurations to your WM Touch from the Discovery bar (Design > Match).
7. Run your system again.